

# Build a future-focused borderless campus for higher education

Innovative Lenovo devices powered by Intel® and Microsoft enable you to better support learning, enhance teaching, and prepare your students for the workplace of the future.



intel  
vPRO

Intel® Core Ultra unlocks new AI experiences.  
Step up to Intel vPro® for an unrivaled business PC solution.

Smarter  
technology  
for all

Lenovo







intel  
CORE  
ULTRA 7

intel  
vPRO

Intel® Core Ultra unlocks new AI experiences.  
Step up to Intel vPro® for an unrivaled business PC solution.

## In this guide

- 3 Better experiences in your school
- 4 Improve learning and teaching
- 5 360-degree protection
- 6 IT productivity from the get-go
- 7 Lenovo, Intel® and Microsoft optimizations
- 8 Smarter deployment
- 9 Six steps to future-proofing your fleet



# Upgrade to a better experience across your institution

Empower faculty, staff, and students at every level with powerful, secure and accessible solutions from Lenovo, powered by Intel® and Microsoft to support, inspire and drive higher education to new levels of innovation.

We provide powerful tools to learn, teach, collaborate, and create, not only enhancing instruction but also ensuring accessibility for diverse learning needs. So that you can easily achieve new levels of productivity, security, and AI readiness for students, faculty, and staff.

This guide is designed to set you on the path to optimizing the hybrid learning environment in your higher education institute – highlighting features, benefits, IT management advantages, and practical steps to get started.

Unlock new AI experiences for your classrooms with Intel® Core Ultra processors. From enabling richer student collaboration, to empowering AI infused creativity and productivity in the classroom.



Lenovo ThinkPad E14



intel  
vPRO

Intel® Core Ultra unlocks new AI experiences.  
Step up to Intel vPro® for an unrivaled business PC solution.



**Support for Windows 10 is ending 14 October 2025. Lenovo will work with you to create the best migration strategy for your unique needs. We're here to help – with guidance, services, and devices running on up to Intel® Core™ Ultra processors that can optimize the power of Windows 11 now and for the future.**

- 1** Ensure you are protected, supported, and future-proofed with the latest devices and OS.
- 2** Give yourself time to plan, ensure inventory availability, and manage the transition.
- 3** Eliminate the maintenance and repair costs of aging equipment.

# Inspire new ideas and power research in higher education



**Powerful for users.** Designed for highly personalized, productive, accessible, and secure education experiences.



**Simple, powerful processing and UX** to improve productivity and satisfaction.



**Smarter collaboration** with Microsoft Teams and accessibility features like live audio captioning, built-in screen reader, voice typing, and more.



**Consistent for IT.** Devices running on the Intel vPro® platform give IT teams more powerful, flexible, and reliable technology that provides them with greater control and the ability to support employees working from anywhere.



**AI enhancements for all.** Intel® Core™ Ultra processors unlock new AI experiences. Copilot in Windows delivers future-focused capabilities including AI-powered search, lesson planning, content creation, and videoconferencing improvements.

To empower the best use of AI, Intel has established a responsible AI effort; working with academic and edtech partners to foster best practices.



**End-to-end security across your campus**



**Zero Trust-ready OS** to protect data and access, anywhere.



**Powerful built-in protections** including hardware-based isolation, encryption, and malware defenses.



**Hardware-enabled security** from Intel® boosts protection and enables the ecosystem to better defend against evolving and modern cybersecurity threats.



## High-value benefits by the numbers

Benefits of Windows 11 devices, including Lenovo ThinkPad series powered by up to Intel® Core™ Ultra processors and Windows 11 Pro, revealed by a Forrester economic impact study included:<sup>1</sup>

**250%**

ROI in three years and payback in less than six months

**20%**

reduced risk of successful security attack

**20%**

increased productivity for security and IT teams

**80%**

reduced number of help desk tickets

**25%**

decreased time for device deployment



intel  
vPRO

Intel® Core Ultra unlocks new AI experiences. Step up to Intel vPro® for an unrivaled business PC solution.

# 360-degree protection

## Powerful, pre-enabled security

Lenovo devices running on up to Intel® Core™ Ultra processors benefit from security rooted in hardware that secures data and maintains device integrity. This is further strengthened by Windows 11, the most secure Windows yet that's backed by layers of powerful default protection that can drop security incidents a reported **58%**.<sup>4</sup>



### Built-in security.

Ensures protections are ready without having to configure devices. Microsoft has increased the security baseline by requiring a security chip (TPM 2) and ensuring protections are built in and turned on by default to protect from malware and sophisticated attacks.



### Pre-enabled virtualization-based security (VBS) and hypervisor-enforced code integrity (HVCI).

Safeguards the operating system and information stored in memory. Powerful hardware-based security built in and enabled by default led to a reported 3.1x reduction in firmware attacks.<sup>4</sup>



### End-to-end Lenovo ThinkShield security suite.

Protect against tomorrow's threats with AI endpoint protection by SentinelOne, hardware isolation, encryption, malware protection, and integrated hardware and OS safeguards.



intel  
vPRO

Intel® Core Ultra unlocks new AI experiences. Step up to Intel vPro® for an unrivaled business PC solution.



# 114%

Higher education cyber incidents increased 114% between 2020 and 2022.<sup>2</sup>



# \$3.9M

Average cost of a higher education data breach: \$3.9M in 2022.<sup>3</sup>

## Effortlessly fortify your fleet across the higher education campus

**ThinkShield.** Explore fully customizable hardware, software, and services solutions to secure your institution.

**Secure Wipe 2.0.** Delete sensitive data on a drive without external tools.

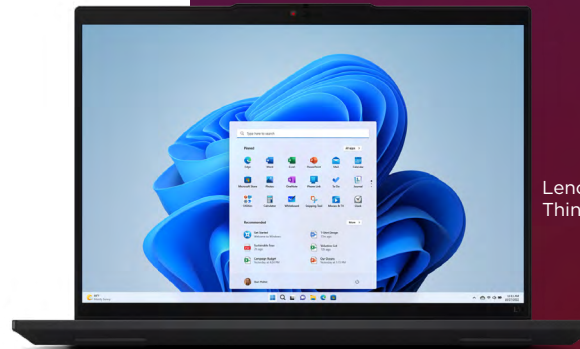
**Firmware Resiliency 2.0.** Expand self-healing capabilities beyond the core BIOS.

### Human presence detection.

Screen lock detects when the user leaves and automatically locks the system.

**Non-soldered SSDs.** Remove before servicing to secure data and keep it under IT control.

**Intelligent PC diagnostics.** Use a simple smartphone app to track more precise servicing results.



Lenovo ThinkPad L14



# IT productivity from the get-go

It's simple to get your fleet up and running fast when you equip users across your higher education institution with the latest devices including Lenovo ThinkBook 14 with Intel® Core™ Ultra processors and Windows 11 Pro.

They come with IT management features that enable you to remotely deploy these devices through the cloud in compliance with district policies, and easily apply the same security policies to on premises and remote devices.\* Cloud-managed security updates offer additional control. Approve, schedule, and monitor security, drivers, and firmware updates through the cloud.

Complete remote management capabilities on the Intel vPro® Platform enable IT to discover, configure, update, repair, and even retire user devices no matter where they are.

Bring out the best in students and educators with AI experiences that are accelerated, safer, and run locally. With the world's largest library of supported AI software, you can rest assured that your classrooms will be ready to take on any task.



Lenovo ThinkBook 14 Gen 7



intel  
vPRO

Intel® Core Ultra unlocks new AI experiences. Step up to Intel vPro® for an unrivaled business PC solution.

# Hand-in-hand optimizations

Windows 11 Pro benefits are amplified by the performance innovations of Lenovo devices, such as ThinkPad L14 featuring Intel® Core™ Ultra processors.



**AI-enhanced.** Gets things done more effectively and efficiently with the help of AI-powered search, content generation, and security advancements from Copilot in Windows.



**5G and Wi-Fi 6 antenna designs.** Newly engineered to provide epic connectivity, with Wi-Fi 7 available on some devices.



**Smart Standby.** A unique Lenovo enhancement that allows users to manage and configure low-power states to maximize battery life.



**Intelligent cooling.** Adjusted through the power slider bar and works in auto mode by default.



**Always On/Always Connected.** Optimizes productivity and collaboration by empowering full wireless performance connectivity in any mode — even with the lid closed.



**Optimized audio.** Dolby Voice for clearer sound in noisy environments and a heightened collaboration experience.



intel  
vPRO

Intel® Core Ultra unlocks new AI experiences. Step up to Intel vPro® for an unrivaled business PC solution.

These powerful, secure and reliable Lenovo devices are perfect for higher education.

## For students

### Lenovo ThinkPad E14

Enjoy optimized performance with dedicated AI engines on Intel® Core™ Ultra processors that enables you to handle compute-intensive coursework or research needs - anytime, anywhere.



## For educators

### Lenovo ThinkPad L14

Harness maximum productivity in your borderless campus with this reliable, powerful sidekick powered by Intel® Core™ Ultra processors - complete with long battery life and faster responsiveness.



## Streamline administrative tasks

- Pin virtual apps to the taskbar and run them as if on the hard drive with Azure Virtual Desktop.\*\*
- Automate tasks across applications with a low code-guided process and pre-built connectors.
- Search apps, websites, Windows settings, research, databases, files, or personnel from one place with Microsoft Search.\*\*\*





# Smarter deployment that future-proofs your technology

As academic, administrative, research, and security demands increase, your institution will need devices that can adapt to continuous advancements in Windows. Lenovo has developed a future-proof solution for your deployments and evolving AI strategies.

Lenovo TruScale Device as a Service (DaaS) can help by taking care of everything from provisioning and deployment through end-of-life reclamation for one predictable monthly fee.

In addition to freeing up people and budget resources, Lenovo TruScale DaaS can help you equip more users for less upfront cost, adapt solutions to specific demands, and even pause when needed.

Keep your institution future-proofed and equipped with the most up-to-date hardware and software, eliminating the need to manage future upgrades and migrations.

TruScale DaaS gives you worry-free, end-to-end lifecycle device management with flexible payment options and one point of contact. Our education experts help assess your needs and deliver a range of services to get you up and running quickly and smoothly.

**intel**  
CORE  
ULTRA 7

**intel**  
vPRO

Intel® Core Ultra unlocks new AI experiences. Step up to Intel vPro® for an unrivaled business PC solution.



# Six steps to future-proofing your fleet

## 1

**Enlist an expert.** As a trusted Microsoft partner with certified global expertise, Lenovo can help deploy, configure, and support the latest solutions so you can unlock all the benefits of Windows 11.

## 2

**Learn the system requirements.** Review the **basic and features-specific requirements** for installing Windows 11 on a PC.

## 3

**Inventory your compatibility.** Determine which devices in your network meet the minimum system requirements. Institutions will be able to move eligible PCs directly to Windows 11 using Windows Update for Business.

## 4

**Confirm with partners and check accessories.** Most software (including third-party ISV security solutions) and accessories that work with Windows 10 are expected to work with Windows 11. Check with your software publisher or accessory manufacturer for specific details on your products.

## 5

**Validate your applications.** App compatibility is a core design tenet of Windows 11. For peace of mind, use **Test Base for Microsoft 365** to test your applications in preview. If any compatibility issues arise, Microsoft App Assure will remediate them.

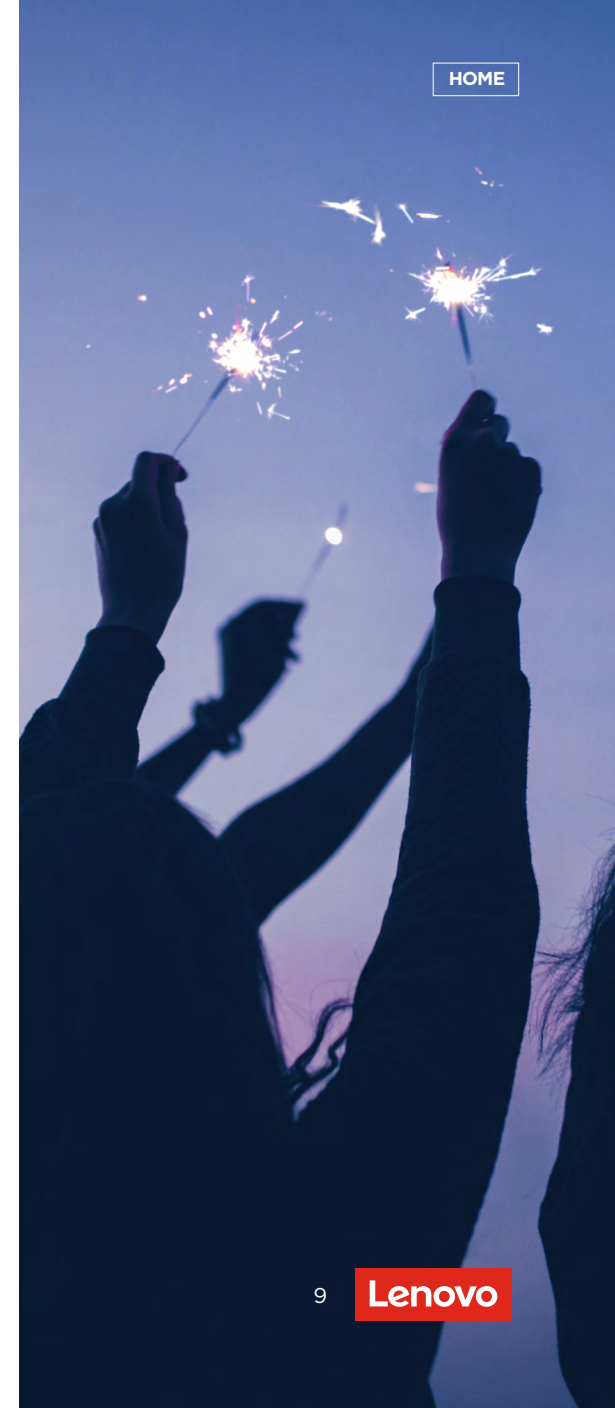
## 6

**Develop a rollout schedule.** Keep the Windows 10 support deadline top of mind so you don't risk running an unsupported OS. Book Lenovo Assessment Service for Windows 11 to get ready for the new OS as soon as you can and plan to complete your migration well before October 14, 2025. **Lenovo Asset Recovery Services** can help you realize potential value from your old technology assets, meet your institutional and environmental responsibilities, and comply with your internal security protocols.



intel  
vPRO

Intel® Core Ultra unlocks new AI experiences.  
Step up to Intel vPro® for an unrivaled business PC solution.



# Ready to evolve your higher ed institution?

Lenovo solutions, including innovative devices like ThinkPad L14 with Intel® Core™ Ultra 7 processors and Windows 11 Pro, help keep your technology efficient and productive whether students and educators are on or off campus. Partner with us for insight, guidance and services to create a secure, simplified and productive campus of the future.

Learn more at [edvision.lenovo.com/a-smarter-way-to-learn](https://edvision.lenovo.com/a-smarter-way-to-learn)

- Sources**
- 1 Forrester, "The Total Economic Impact™ of Windows 11 Pro Devices," December 2022
  - 2 Checkpoint, "Cyber Attack Trends: 2022 Mid-Year Report," 2022
  - 3 IBM Security, "Cost of a Data Breach Report," 2023
  - 4 Techaisle, "SMB Windows 11 Survey Report," February 2022

\* Active Directory and internet connection required.  
 \*\* Azure Virtual Desktop license required.  
 \*\*\* Microsoft 365 required.

© Lenovo 2025. All rights reserved. v1.00 March 2025.



intel vPRO

Intel® Core Ultra unlocks new AI experiences. Step up to Intel vPro® for an unrivaled business PC solution.



Smarter technology for all

